



Dare County Roanoke Island Water System Expansion



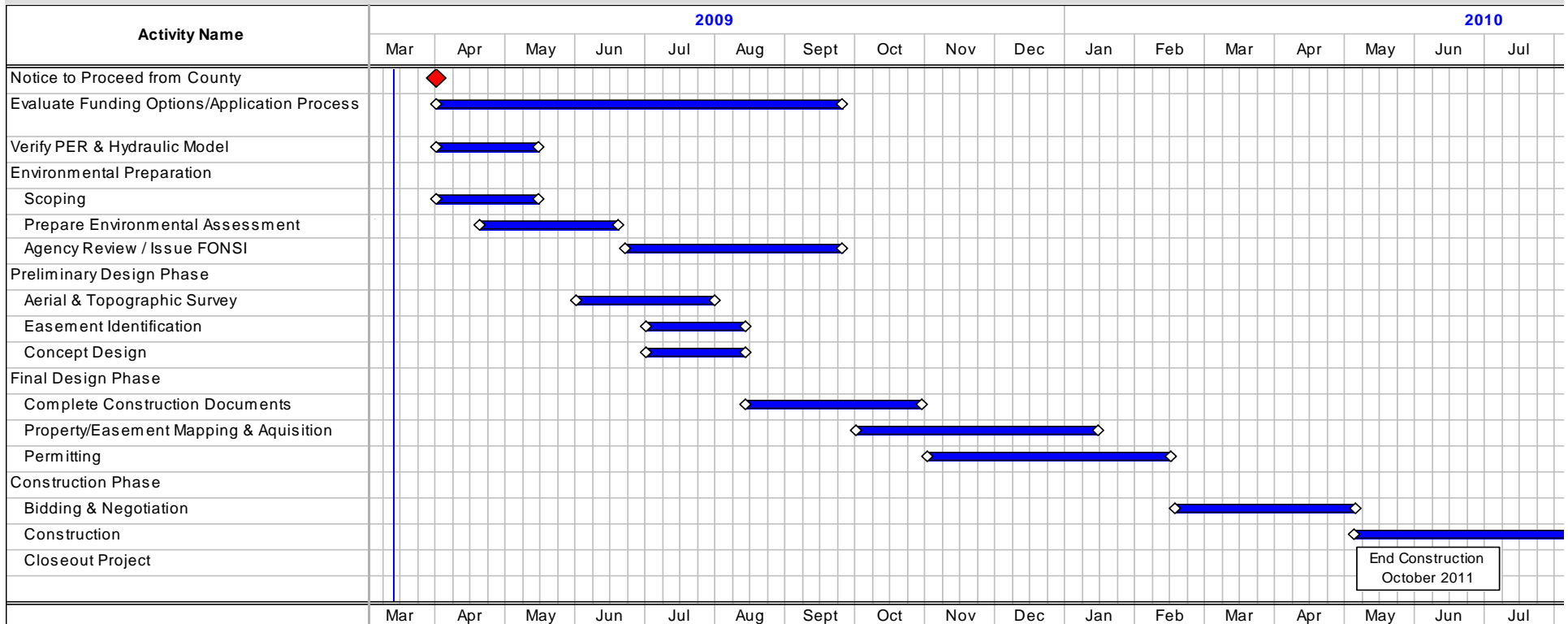
THE WOOTEN COMPANY

Project Approach

1. Evaluate Funding Options
2. Verify PER & Calibrate Hydraulic Model
3. Environmental Scoping
 - Environmental Assessment
4. Preliminary Design Phase
 - Aerial & Land Survey – W.M. Meekins
 - Easement Identification
 - Concept Design
5. Final Design Phase
 - Complete Plans/Specs
 - Property Acquisition
 - Permitting



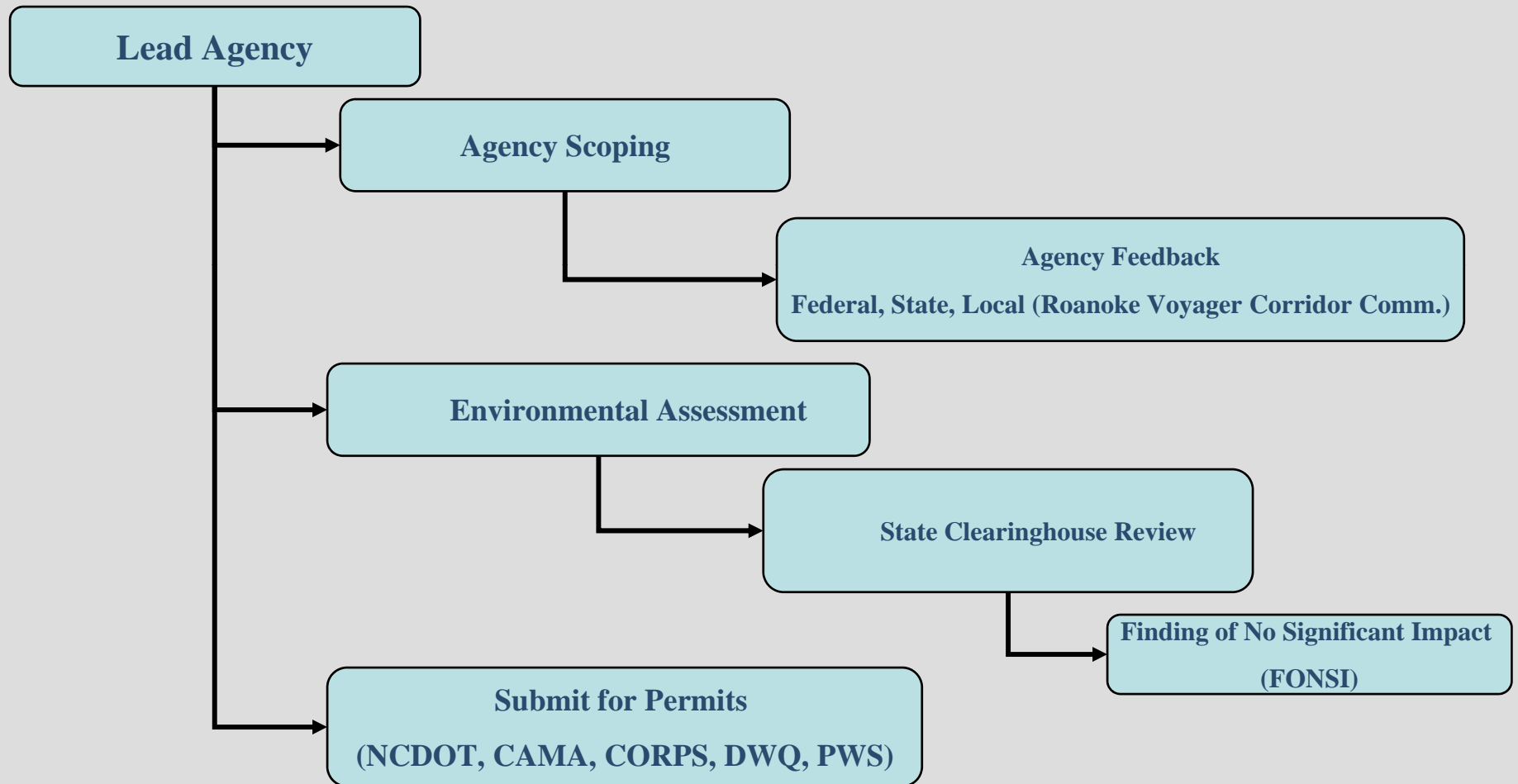
Schedule



End Construction
October 2011

Schedule depends largely on project funding and permitting.

Permitting



Why Wooten?



- Experience with water systems
- Successful experience with Dare County
- Established relations with permitting and regulatory agencies
- Familiarity with federal and state grant/loan programs
- Familiarity of project area
- Success with projects of this size
- Single source accountability